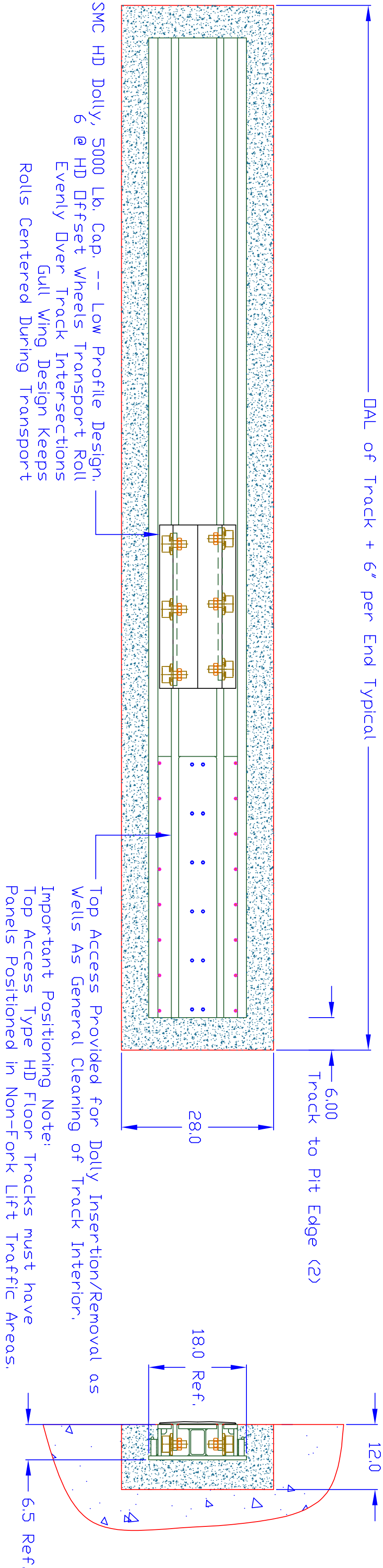
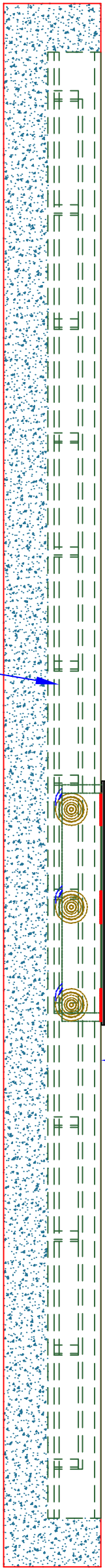


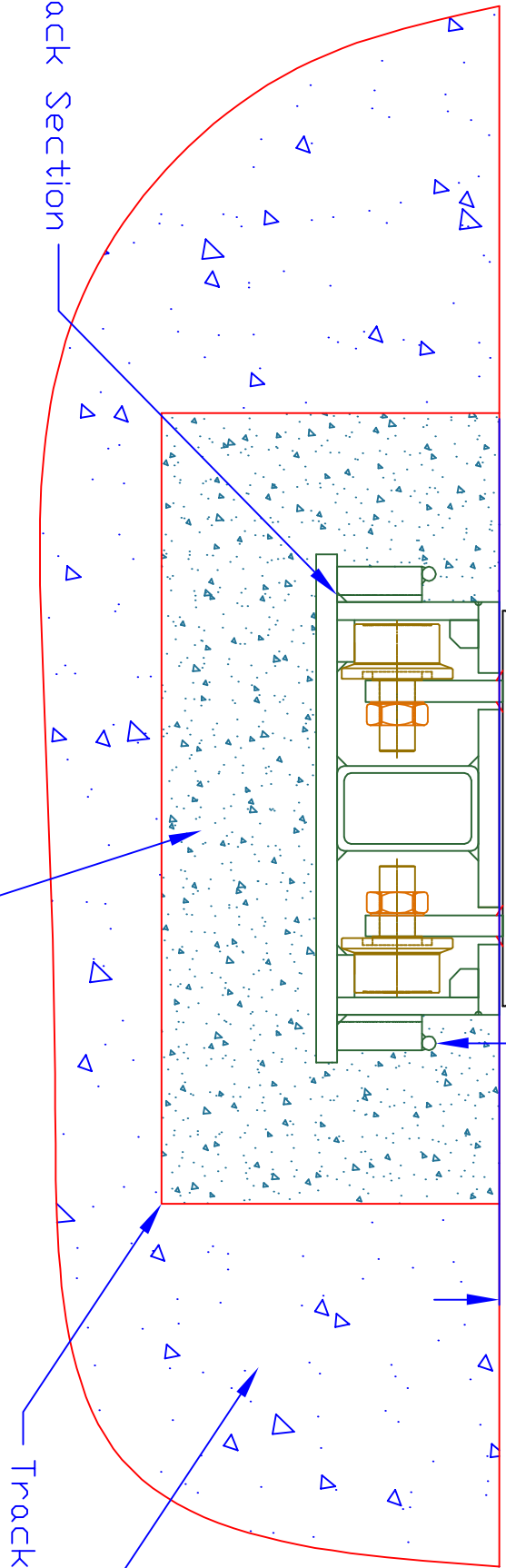
Pit Dimensions are Typical and are Provided for Reference Only. Review Site Specific Pit Plans) for Any/All Pit Dims. and Tolerances.



SMC HD Series Track Section, Fully Encased in Concrete. Rugged Design Allows for Roll and Forklift Traffic. A Solid Cross Section and a Wide Steel Framework Distributes Loads Evenly thru to the Underlying Foundation And Provides a Solid Base for Years of Service.



SMC HD Series Track is Fabricated from Solid Steel Plate and Tube Sections. The Duter Side Panels Support Gussets + Longitudinal Rebar Sections that when Imbedded in Concrete, Form a Solid Framework Allowing for Heavy Roll Traffic.



Concrete to Fill Void in Pit and Secure Track In Place Once System Components are Properly Located and Anchored.

MANUAL TRACK
Section A-A
(x2.5 SCALE)

General Installation Instructions:
Track is Positioned in Center of Pit, Suspended with SMC Provided Hangars. Track is Adjusted to be Even with Floor Line and Equally Spaced End-to-End. (Ref. Noted Dims.) Once Positioning is Verified, Track Hangars are Anchored to the Floor/Foundation to Prevent any Lift Effect during Backfill Operation. Both Track Dolly Runner Slots are then Sealed with 3" Tape, Anchors, Shims, Tape, Etc. Provided by SMC.

Track Pit and Underside of Track Section Backfilled with Concrete to Secure In Place. When Concrete is Cured, Anchors and Hangars are Removed.

To Install Dolly(s) Remove $\frac{3}{8}$ " and $\frac{1}{8}$ " Dia. Socket Capscrews on Removable Top Panels and Lower Dolly(s) onto Track Rails.

<div>Concrete to form void in the ground secure track in Place Once System Components are Properly Located and Anchored.</div>																			
MANUAL TRACK																			
Section A-A																			
(x2.5 SCALE)																			
										</									