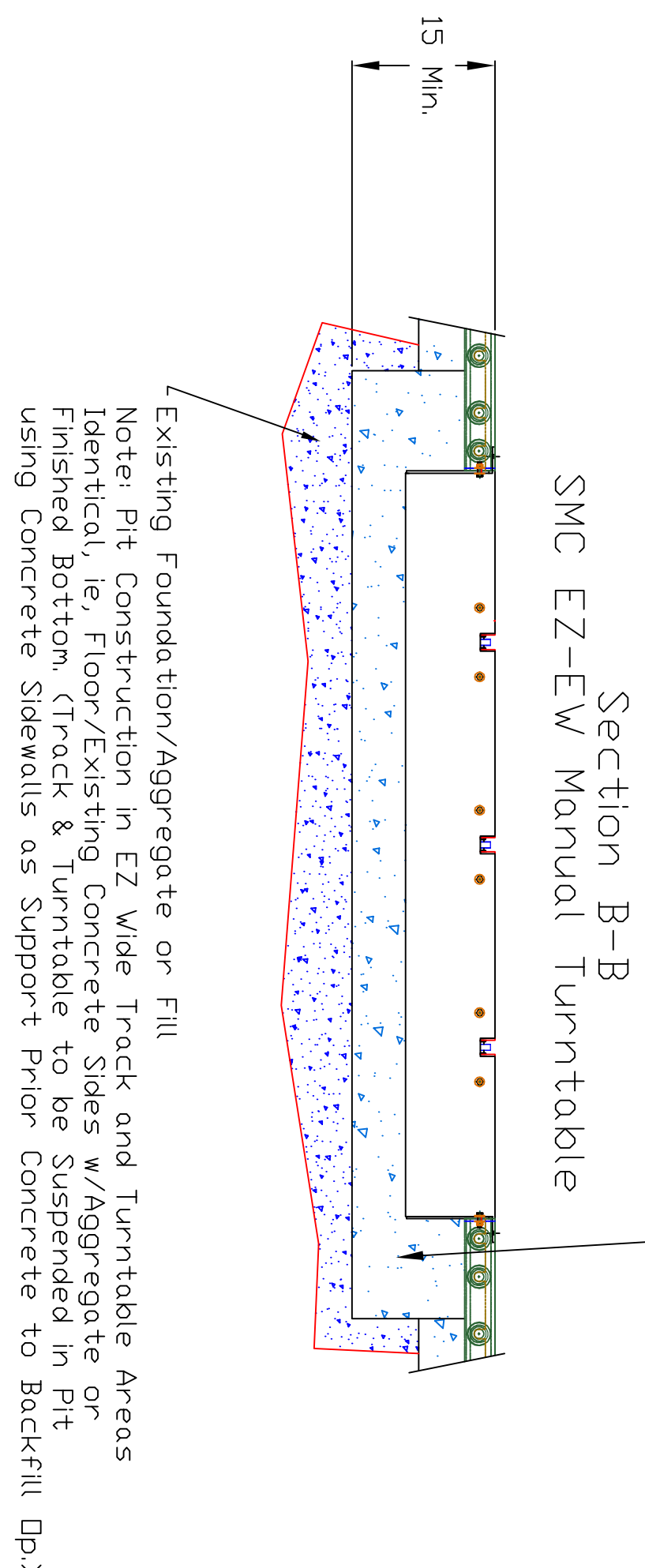
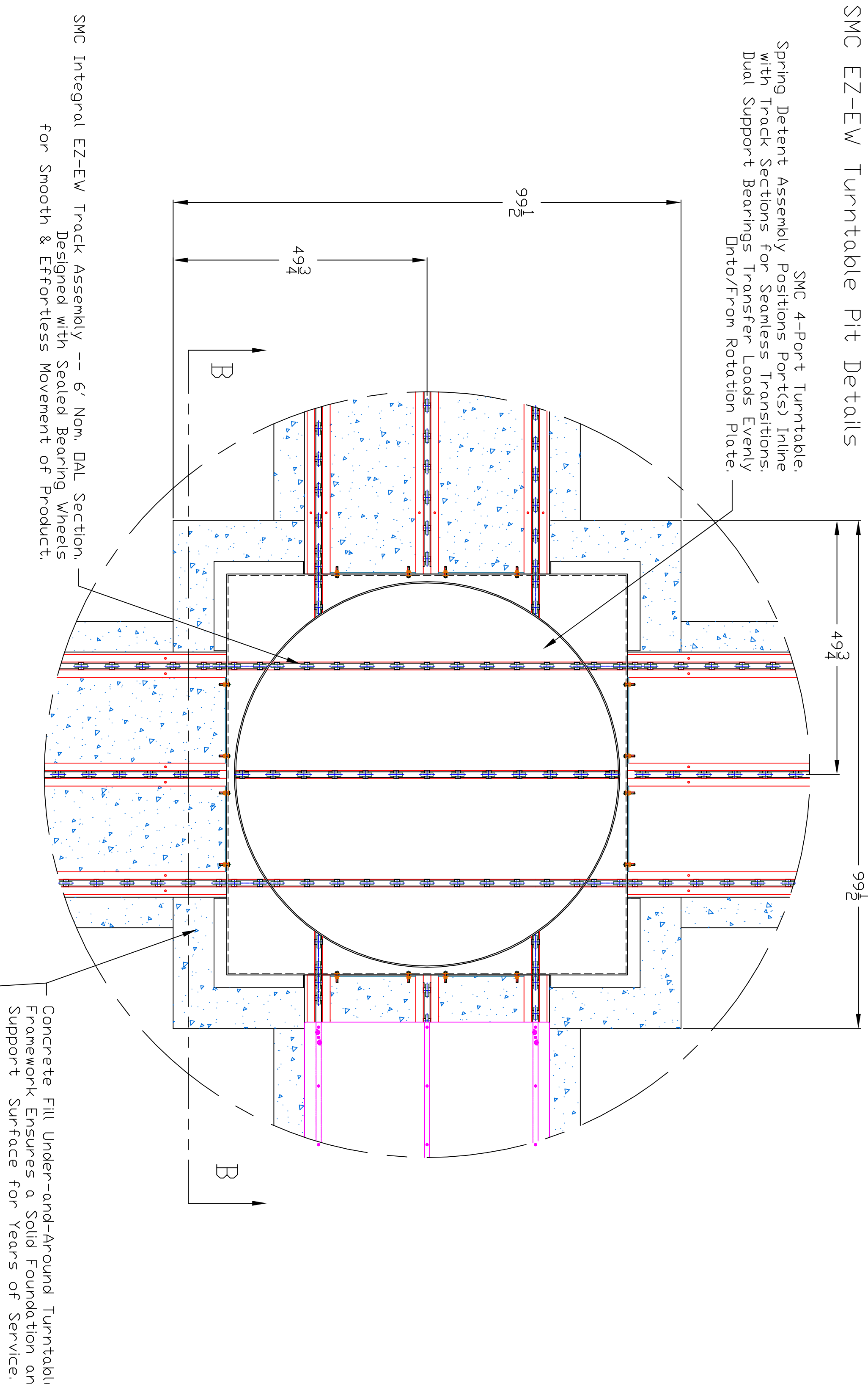
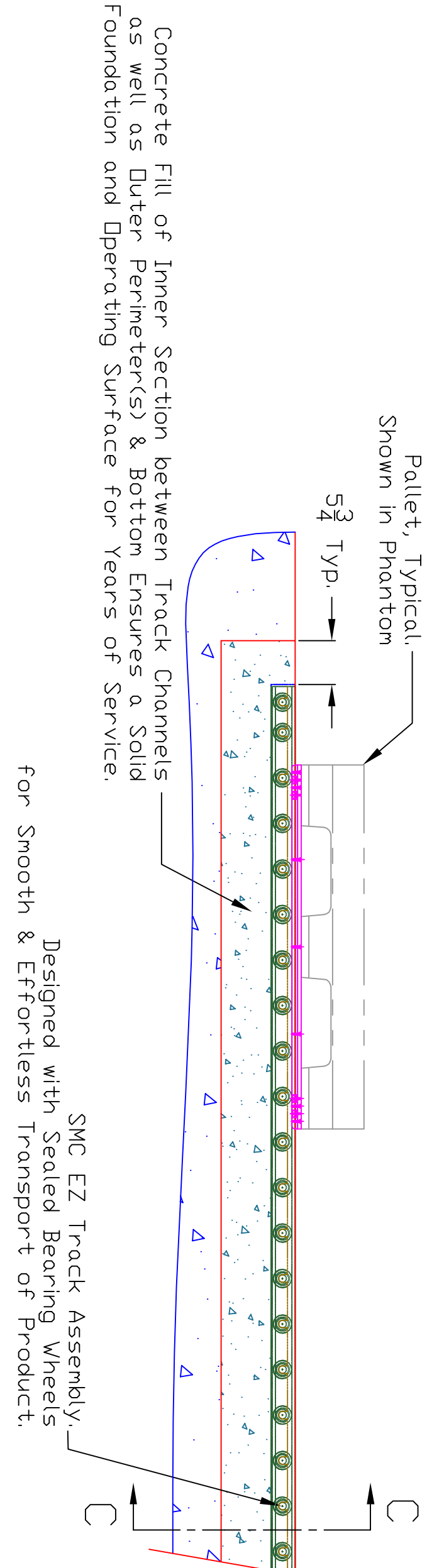


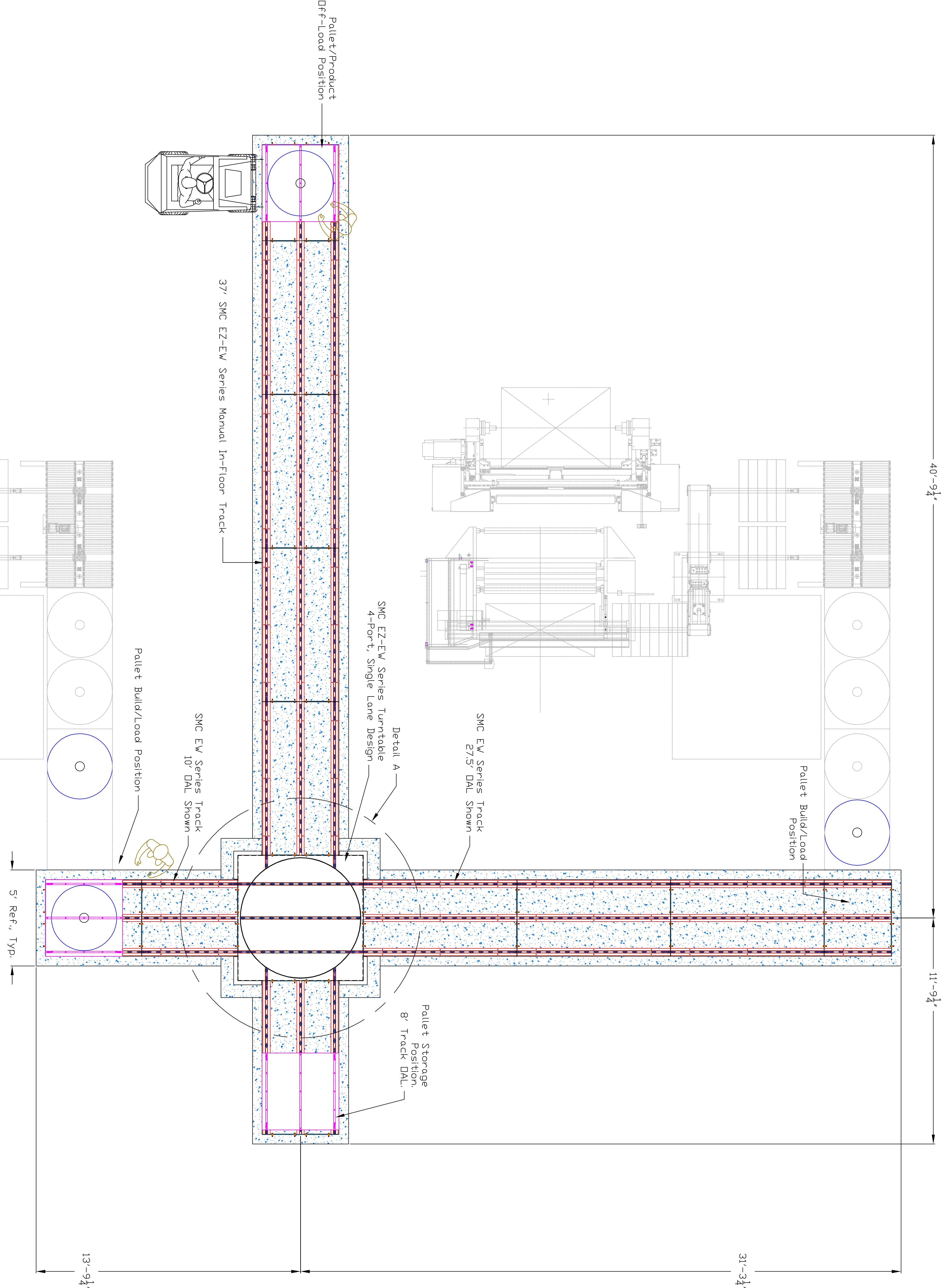
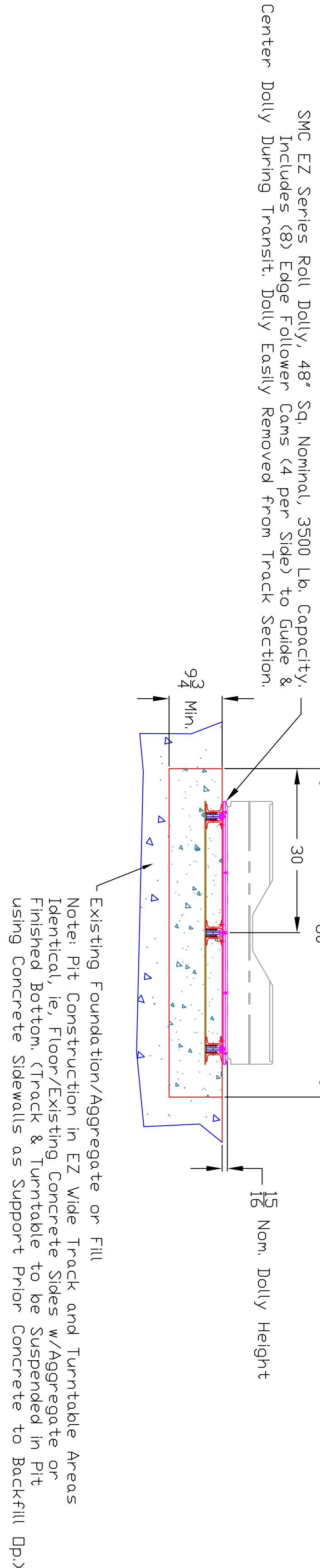
Detail A (x2 Scale)
SMC EZ-EW Turntable Pit Details



SMC EZ-EW Series Track
Typical Pit Details (x2 Scale)



Section C-C, EZ-EW Track Pit Detail



SMC Pit Tolerances & General Finish Notes

Pit Depth: +1/4 (Deeper), -0.0

(Depth is Ref. to Floor Line at the Equip. Mounting Area.)

[illegible]